



UNIVERSITY OF
WEST LONDON

LONDON COLLEGE OF MUSIC EXAMINATIONS

Jazz Diplomas Syllabus

Piano, Flute, Clarinet, Saxophone, Trumpet, Cornet,
Flugelhorn, Trombone

2011 - 2014



UNIVERSITY OF
WEST LONDON

LONDON COLLEGE OF MUSIC EXAMINATIONS

Jazz Diplomas Syllabus

**DipLCM, ALCM, LLCM and FLCM
in Jazz Performance**

Piano

Flute

Clarinet

Saxophone

Trumpet, Cornet & Flugelhorn

Trombone

2011-14

For information about Diplomas in Teaching, please refer to the
Music Performance and Teaching Diplomas Syllabus.

LCM Examinations

Director of Examinations

John Howard BA PhD

Chief Examiner in Music

Philip Aldred BEd FLCM

University of West London LCM Examinations

St Mary's Road
Ealing
London W5 5RF

tel: +44 (0)20 8231 2364

fax: +44 (0)20 8231 2433

email: lcm.exams@uwl.ac.uk
uwl.ac.uk/lcmexams

Contents

	Page
London College of Music Examiners	4
London College of Music / London College of Music Examinations	5
1. Syllabus introduction	
1.1 Validity of this syllabus	6
1.2 Rationale	6
1.3 Syllabus aims	6
1.4 Syllabus objectives	6
1.5 Availability of examinations and entry details	7
1.6 Duration of examinations	7
1.7 Target groups	7
1.8 Candidates with particular needs	7
1.9 Progression	8
1.10 Accreditation	9
2. Syllabus content	
2.1 Syllabus overview and general guidelines	10
2.2 Attainment levels	11
2.3 Pre-requisite qualifications	11
2.4 Description of examination components	12
Piano	12
Wind & Brass	18
2.5 Weightings for examination components	22
3. Resources	
3.1 Discography	23
3.2 Suggestions for listening and transcriptions	24
3.3 Useful reference material	26
4. Assessment	
4.1 How marks are awarded	27
5. Awarding and reporting	
5.1 Issue of results	31
5.2 Awards	31
5.3 Repeats of examinations	31
6. Regulations and information	32

London College of Music Examiners

Philip Aldred BEd FLCM [*Chief Examiner in Music*]
William Alexander BSc BMus MBA MMus PhD GRIC FTCL ARCM ATCL
CertFAE *
Brian Armfield GBSM FTCL ARCM ABSM PGCE HonFLCM
Helen Arthur
Marie Barry BA FLCM ALSM ALAM
David Beer BA PGCE FLCM
John Beilby BMus PhD MTC(Lond) GLCM FLCM LRAM LTCL HonFIEMS †
Erica Beynon MA FLCM LLCM ALCM
John Branton FVCM LVCM(TD) AMusVCM CT(VCM) ATM(SMTC) HonVCM
Claire Brock BA GradDip
Joshua Brown BA LTCL PGCE
Keith Brown BMus ALCM PGCE
Catherine Burnham BMus LTCL PGCE
Dorothy Carnegie BMus PGCE
Paul Carter BMus MA DASM ALCM PGCE FRSA
Rebecca Chambers GRNCM PGRNCM
Alice Chua MA FLCM ATCL
Rosy Chua FLCM ATCL
Gerald Collins LLCM(TD)
Justin Connolly BMus ARCM FLCM
Peter Cook GLCM FLCM FVCM PGCE *
Stuart Corbett BA FDipMus FVCM(Hons) LTCL LLCM PGCE *
Jamie Cordell BMus PGDip
Hannah Cott BMus
Barbara Courtney-King LRAM ARCM
Sandra Cromie BA LLCM(TD) ALCM PGCE
Patrick Davey BMus MA TTCT
Gillian Davies CertEd CertSpecialEd
Katherine Denton BMus LRAM DipABRSM
Janet Dowsett FLCM *
Barry Draycott MusB FTCL FLCM ARCM ARCO HonLCM *
David Edwards BEd LGSM
Jennifer Fisher DipRAM LRAM BMus GSMD
Sheila Gaskell FTCL LRAM LLCM
Aidan Geary GLCM
Kathleen Gilbert LRAM ARCM DipEd
Kevin Gill FRCO GBSM LTCL
Coral Gould LRAM ARCM LTCL CertEd
Moira Gray FLCM LRAM LTCL ARCM DipMus(Open)
Yolande Gregor-Smith LRSM ARCM DipTESOL
Ann Griggs BA MA LRAM ARCM HonLCM
Nigel Groome GLCM ARSCM FLCM *
Peter Hallam BEd MA LTCL
Mary Hamilton GTCL LTCL Dip.Acad.di Sta.Cecilia Rome
Mary Hardy-Green LLCM
Paul Harrison MA GLCM FLCM LLCM(TD) LTCL PGCE
Andrew Hatt BA HonLCM
Stephen Hazell BA PhD [*Chief Examiner in Drama and Communication*]
Sheila Hemming LLCM ARCM HonLCM
Ann Hohenkerk ALCM
John Howard BA PhD [*Director of Examinations*]
Vic Hyland
Marian Ingoldsby BMus MA DPhil LTCL LRSM
Deborah Jones BA DipMus ALCM
Daithi Kearney BA HDipEd TTCT PhD
Louise Keating BA BMus GradDip TTCT
Chris Kimber GGSM
Richard Lambert BEd MA ALCM FRSA *
Elizabeth Lannigan ALCM
Tara Leiper BEd MA LTCL LLCM(TD) ARCM DipABRSM
Jayne Lewis BA PGCE
Jayne Lindgren LLAM †
Jocelyn Lord MA FLCM LGSM LLAM ACSD †
Helen Madden GCLCM
Susan Maguire BA HDipEd Dipltal LLCM(TD) ALCM EFLCert
Andrew McBirnie BA MMus PhD LTCL *
Deirdre McDonald
Ray McGinley ALCM
Paula McKernan LLB ALCM(TD)
Andrew McManus BMus GBSM FLCM ABSM(TD) ACertCM TEFL(Dip)
Neil Millensted MA FTCL LRAM ARCM
Michael Milner LGSM ALCM
John Mitchell
Joyce Mitchell FLCM LLCM ALCM
Mary Mitchell-Ingoldsby BMus MA HDip(Ed)
Colette Moloney BMus PhD DipCSM LLCM(TD) LRSM LTCL ALCM *
Ng Kok Cheow LTCL LRSM LMusTCL
Bridget O'Connell BMus MA LLCM ALCM(TD)
Susan Olden LRAM LLCM(TD) ARCM AMusTCL
Ates Orga BMus FTCL LMusTCL ATCL
Gillian Patch MusB MMus PGDip LLCM LTCL LGSM HonFLCM *
Christine Peet BA MEd CertEd
Tony Pegler FLCM
Maxwell Pettitt BMus MMus ARCM ALCM FRSA
Kathleen Phillips LGSM ALCM
Elizabeth Pipe LLCM
Peter Precious GradDipMus
Jenifer Pressdee LGSM ANEA
Nigel Ramage MA DipEd †
Peter Reder MA GLCM ACSD †
Michael Regan BMus MMus LGSM HonFLCM
Nathan Rose BMus PGDip ALCM
Claire Rubman PhD FLCM LLCM(TD)
Gibson Russell GRSM LRAM ARCM HonFLCM
Rex Satchwell BA LGSM LRAM HonFLCM
Ian Seddon FLCM ATCL ARCO
Gillian Shimwell AGSM CertEd
Dave Simpson LGSM
Tony Skinner FRSA
Elaine Smith GLCM LLCM HonFLCM *
Alison Sparrow BA
Jennifer Speculand FLCM FSTD LLCM(TD) LGSM ALAM †
Christopher Stanbury BMus MMus FLCM
Christopher Tinker PhD GRSM ARCM PGCE
John Traill BA MMus DPhil
J Godfrey Turner FLCM LTCL LRAM ARCM MCoIIP
Leo Turner LTCL LLCM LGSM
Christopher Tutin BMus MA LRSM ALCM CertRCO
Michael Venables BA PGCE
Jill Wallis BEd FLCM LTCL
Richard Walsh BA MPhil FLCM
John Warren BMus GMus FLCM LGSM LTCL ACertCM CertEd
Tonni Wei LMusVCM ARCM
David Whittaker GLCM FLCM LLCM(TD) *
Peter Wild GRSM LRAM ARCO *
Leonie Wilde BA LLAM
Martyn Williams BMus GRSM FRCO FLCM MTC PGCE HonFLCM *
Peter J Williams GLCM MBA FLCM LLCM(TD) NPOH
Wei Wong GLCM LLCM(TD) PGCE HonLCM
Carol Woods MA GRSM ARMCM

* denotes Senior Examiner in Music † denotes Senior Examiner in Drama and Communication
[This list was correct at the time of printing.]

London College of Music

The London College of Music (LCM) is the largest specialist Music and Performing Arts institute in the UK. It has a long history of music education dating back to 1887, when it was situated in Great Marlborough Street, London, where the college began as an examination body. In 1991 LCM became part of Thames Valley University, which was renamed the University of West London in 2011.

The London College of Music offers an impressive range of innovative courses, respected worldwide and delivered with creativity and passion by practising industry experts. Courses include Performance and Composition, Popular Music Performance and Recording, Performing Arts, Music Management, Music Technology and Theatre Production.

Further information about full-time programmes for undergraduate and postgraduate students, in addition to the Junior College, is available from:

- the UWL Learning Advice Centre - tel: 020 8579 5000; email: learning.advice@uwl.ac.uk
- the Faculty of the Arts office - tel: 020 8231 2304; email: music@uwl.ac.uk
- www.uwl.ac.uk/music

London College of Music Examinations

External examinations have been awarded by the London College of Music since the institution's founding in 1887. Today, examinations are held throughout the United Kingdom, Republic of Ireland and at many overseas centres, and are unique in the graded examinations world in being awarded by a university.

LCM's graded and diploma examinations in most subjects are accredited by Ofqual (formerly the Qualifications and Curriculum Authority, QCA), which serves as a UK governmental stamp of approval and quality assurance, confirming parity of standards with other similar examinations boards. Furthermore, the resulting mapping of LCM Examinations onto the QCF (Qualifications and Credit Framework) means that candidates applying to UK universities through the UCAS system can increase their points tariff if they have been awarded a Pass or higher at Grades 6-8 in an accredited subject.

LCM Examinations are distinctive, both in the qualifications offered and in the administration and running of the exams. We have retained the well-known traditional atmosphere and qualities of the London College of Music: informality, friendliness and approachability, although set in a fully professional and modern context. We are small enough that enquiries to the head office can be dealt with speedily and efficiently, and we are able to get to know many of our representatives and teachers personally by name. Examiners pride themselves on being friendly and approachable, ensuring candidates are put at their ease and are thus able to perform to their full potential; yet they are professional, applying thorough and objective assessment criteria in forming their judgements.

Our range of syllabuses and exam formats is exceptionally wide. Examinations may be taken in piano, all orchestral instruments, classical singing, music theatre, popular music vocals, guitar, electronic keyboard, electronic organ, drum kit, percussion, church music, Irish and Scottish traditional music, jazz (piano, wind and brass), ensemble, early learning, theory (both classical and popular) and composition. Examinations in acoustic, electric and bass guitars are offered in partnership with the Registry of Guitar Tutors (RGT). Our diplomas are internationally recognised and include composition, conducting, thesis and theoretical diplomas as well as performing and teaching diplomas in all instruments, across four levels.

We offer a number of pre-Grade 1 Step exams. Graded exams include a viva voce element, which encourages candidates to think, both technically and critically, about the music they perform in the exam. Syllabuses contain a wide range of repertoire options, sometimes including an own choice element. Finally, we offer the very popular Leisure Play option, where candidates perform three pieces plus a fourth own choice, but do not attempt any of the additional components of the exam.

Graded and diploma syllabuses are available free of charge from LCM Examinations and from local representatives.

1. Syllabus introduction

1.1 Validity of this syllabus

This syllabus is valid from 1 January 2011 until 31 December 2014.

1.2 Rationale

LCM's graded and diploma qualifications make a distinctive contribution to education in and through music, and drama and communication, because of the emphasis placed upon the following combination of characteristics:

- creative thinking;
- practical skills either independent of literacy, or related to it;
- encouragement to think, both technically and critically, about the repertoire and tasks performed in practical examinations;
- a distinctively broad stylistic range, as reflected in tasks, endorsements and repertoire;
- the provision of assessment in areas not traditionally included within the scope of graded examinations;
- a strong emphasis on the acquisition and demonstration of skills and understanding that are of contemporary relevance to the performing arts.

In the standards set, in structure, and organisation, LCM's graded qualifications and diplomas are broadly comparable with those of other awarding bodies offering similar qualifications in music and in drama/communication. However, LCM's syllabuses offer the opportunity to develop pathways into learning that both complement and provide genuine alternatives to the study of the arts within school, FE and HE curricula, and within the context of life-long learning. Because of this, they are capable of being used to extend and enrich full-time education and individual tuition, and offer alternative routes that will enable teachers to pursue the objective of equipping young people and adults with highly relevant creative, expressive and technological concepts and skills.

1.3 Syllabus aims

A course of study based on LCM's graded and diploma syllabuses is intended to provide:

- a progressive and unified assessment system, enabling candidates to plan and obtain an effective education in and through the arts;
- skills of organisation, planning, problem-solving and communication, through the study of the arts in performance and theory;
- enhanced ability in acquiring the personal disciplines and motivation necessary for life-long learning;
- an enduring love, enjoyment and understanding of the performing arts, from the perspective of both participant and audience;
- an assessment system equipping candidates with added value to enhance career routes, educational opportunities and decision-making.

1.4 Syllabus objectives

A course of study based on this syllabus is intended to provide:

- a learning basis for candidates to fulfil their potential as jazz performers at an advanced level;
- opportunities for learning and assessment that are both creatively challenging and technologically relevant;
- opportunities for mastery learning that are structured and directly related to the repertoire published for each grade;
- candidates with the basis for study and practice to develop relevant and usable skills and concepts.

1.5 Availability of examinations and entry details

Practical examinations take place throughout the year according to location. In the UK and Ireland, practical examinations are held three times a year at public centres: Spring (March/April), Summer (June/July) and Winter (November/December). The dates when each year's sessions begin and end are published in the preceding Autumn. Completed entry forms, together with full fees, must be submitted to the representative of the chosen examination centre on or before the closing date, as listed on entry forms.

The DipLCM diploma may be taken at any centre. ALCM, LLCM and FLCM diplomas may only be taken at a diploma centre. Please contact LCM Examinations, or visit the website (uwl.ac.uk/lcmexams), for details of your nearest appropriate centre.

In addition, LCM conducts examinations at schools and colleges where preparation for LCM examinations supports and complements the course, provided there are sufficient entries to make the visit viable, and any venue-related costs are covered by the applicant. The co-ordinating teacher is responsible for timetabling the examination day. Please contact LCM Examinations for further details.

1.6 Duration of examinations

Assessment durations, which include discussion and report writing time for the examiners, are as follows:

DipLCM	ALCM	LLCM	FLCM
35 minutes	50 minutes	50 minutes	70 minutes

1.7 Target groups

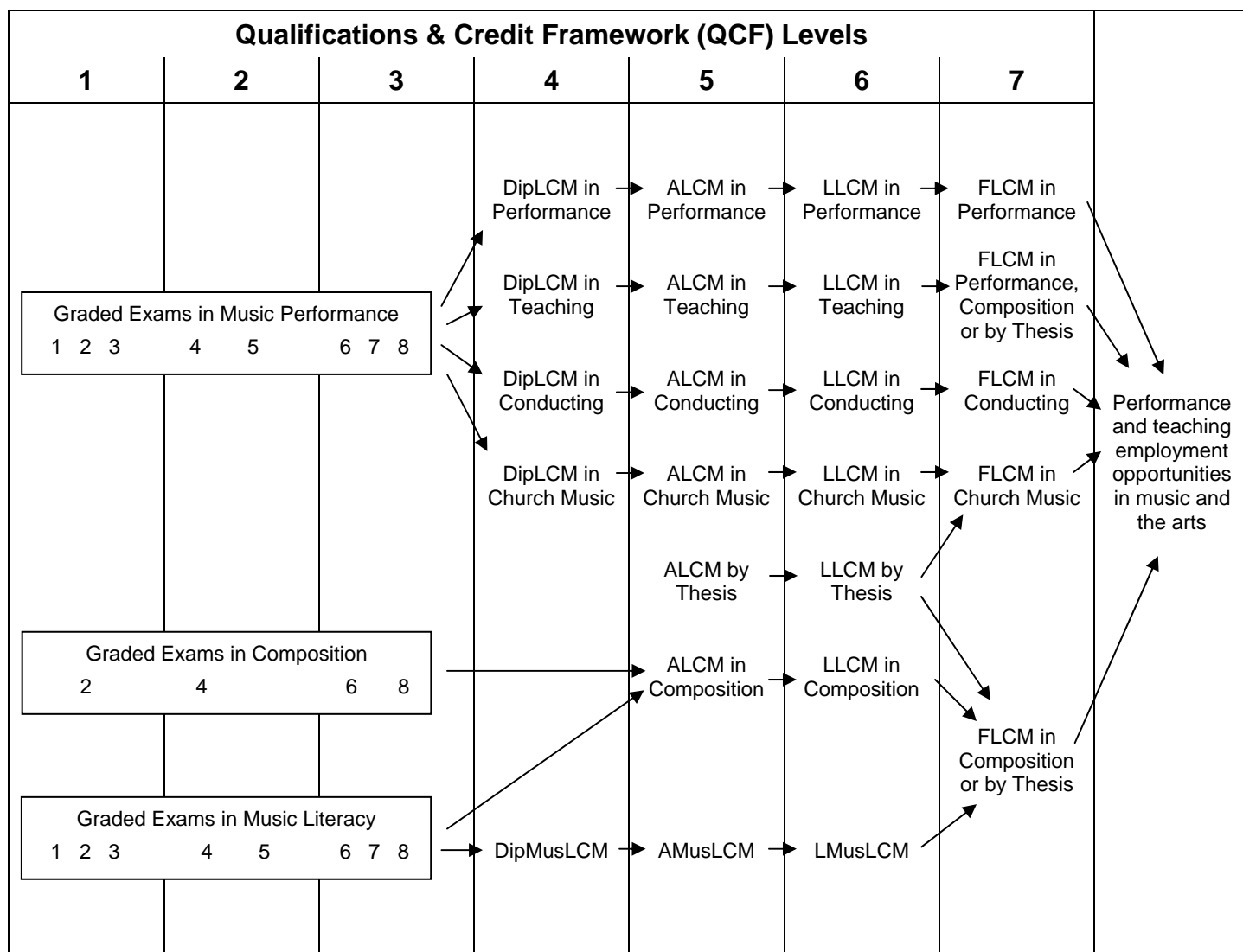
LCM Examinations are open to all. There are no minimum age restrictions. However, in practice, it is unlikely that candidates below certain ages will possess the degree of musical and interpretative maturity required for success at the different levels of diplomas, as indicated below:

Diploma:	Recommended minimum age:
DipLCM	14
ALCM	15
LLCM	18
FLCM	18

1.8 Candidates with particular needs

Information on assessment, examination and entry requirements for candidates with particular needs is contained in the document *Equality of Opportunity, Reasonable Adjustments and Special Consideration*. Copies of this are available free of charge from the LCM Examinations office (tel: 020 8231 2364).

1.9 Progression



Progression from Music Performance Grades:

- Performance route: DipLCM in Performance, ALCM in Performance, LLCM in Performance, FLCM in Performance
- Teaching route: DipLCM in Teaching, ALCM in Teaching, LLCM in Teaching, FLCM in Performance or Composition or by Thesis
- Conducting route: DipLCM in Conducting, ALCM in Conducting, LLCM in Conducting, FLCM in Conducting

Progression from Music Literacy Grades:

- Theory route: DipMusLCM, AMusLCM, LMusLCM, FLCM in Composition or by Thesis
- Composition route: ALCM in Composition, LLCM in Composition, FLCM in Composition or by Thesis

Progression from Drama & Communication Grades:

- Performance route: DipLCM in Performance, ALCM in Performance, LLCM in Performance, FLCM in Performance
- Teaching route: DipLCM in Teaching, ALCM in Teaching, LLCM in Teaching, FLCM in Performance

The above chart outlines the overall framework. Some qualifications may not be offered in particular subject areas. Some subjects shown are not accredited by Ofqual. QCF levels are included to indicate the standard of qualifications. Please contact LCM Examinations for full details.

LCM music diplomas are mapped against the University of West London BMus and MMus degrees, and are awarded automatic credit value. For more information, please contact LCM Examinations.

1.10 Accreditation

LCM's diplomas in jazz performance are regulated in England by Ofqual (formerly QCA), and by the corresponding authorities in Wales (DfES) and Northern Ireland (CCEA). They have been placed on the Qualifications and Credit Framework (QCF) at Levels 4, 5, 6 and 7.

The table below shows the qualification number, QCF title and credit value of each diploma. The awarding organisation is **University of West London Qualifications (UWLO)**.

Please contact us, or consult the Register of Regulated Qualifications (<http://register.ofqual.gov.uk>), for further details, including unit numbers.

Diploma	Qualification Number	Qualification Title	QCF Credits
DipLCM in Jazz Performance	600/0639/0	UWLO Level 4 Diploma in Music Performance (QCF)	90
ALCM in Jazz Performance	600/0755/2	UWLO Level 5 Diploma in Music Performance (QCF)	90
LLCM in Jazz Performance	600/0756/4	UWLO Level 6 Diploma in Music Performance (QCF)	90
FLCM in Jazz Performance	600/0758/8	UWLO Level 7 Diploma in Music Performance (QCF)	225

2. Syllabus content

2.1 Syllabus overview and general guidelines

This London College of Music Examinations syllabus is designed to help candidates prepare for the four levels of jazz performance diplomas awarded by University of West London Qualifications. It provides a structured approach which enables students to learn to play a musical instrument, and to develop capability as a jazz performer, at an advanced level. The syllabus clearly describes what is expected and how the achievements of the candidate are to be assessed, so that candidates can be thoroughly prepared to master the requirements and to demonstrate these in an examination.

Examinations are held at approved centres in the UK and overseas, and are assessed by trained external examiners. It may be possible for candidates to be examined at a 'jazz venue', with appropriate equipment. Prior application must be made to the Chief Examiner in Music, and extra costs may be incurred.

Candidates are offered maximum flexibility in presenting their programme, and may perform one of the improvised pieces on a second instrument if they wish. Pianists may perform as a soloist, or with an accompanying rhythm section. The use of front-line horn players / vocalists is also encouraged, to allow the candidate to demonstrate support and rhythm section skills. Wind and brass players may elect to use live accompaniment, whether piano only, or full rhythm section. In the case of additional live players being employed, all instruments must be set up and prepared prior to the examination; arrangements should be made in advance with the LCM centre representative. All candidates are welcome to use backing tracks, including tracks created by themselves. It is the candidate's responsibility to provide and set up suitable audio equipment. Digital pianos with variable voicings are acceptable for all Jazz Piano exams.

The performance sections should reflect richness and diversity of style, supported by good technique and a creative instinct.

Improvisations must not be written out, but embellishments may be indicated on the chart. Solos should cover approximately two or three choruses.

Programme notes are not essential, but welcome. A list of pieces, however, should be given to the examiner(s). The pieces should be introduced, as at a gig, so that communication skills can be maximised and assessed.

FLCM recitals only may take place in front of an audience, provided that (a) this does not affect the normal examination procedure (ie. intervals, breaks, and the use of a compère are not permitted); and (b) this has been agreed in advance with the Chief Examiner in Music.

Own choice items must be of a technical standard consistent with that of the appropriate diploma level. It is the responsibility of candidates to ensure that this is the case, and, where own choice repertoire does not enable candidates to demonstrate mastery at the relevant level, the marking may reflect this. Advice on the selection of own choice repertoire is available from the Chief Examiner in Music.

Please refer to the *Syllabus for Graded and Leisure Play Examinations in Jazz Performance* for information on graded and leisure play jazz examinations.

Please refer to the *Music Performance and Teaching Diplomas Syllabus* for information on jazz teaching diplomas.

2.2 Attainment levels

DipLCM in Jazz Performance. Candidates who enter for this examination will be expected to demonstrate a standard of performance beyond that of Grade 8, consistent with a Level 1 (first-year) undergraduate recital. A solid technique, competent standard of improvisational skill, and the ability to communicate an emerging and mature sense of musical personality, will be expected.

ALCM in Jazz Performance. This diploma demands a higher standard of performance and musicianship, consistent with a Level 2 (second-year) undergraduate recital. A solid technique, and the ability to communicate a degree of flair and imagination in performance, will be expected.

LLCM in Jazz Performance. This diploma demands a fully professional standard of performance and musicianship, consistent with a Level 3 (final-year) undergraduate recital. An extremely secure and versatile technique, together with the ability to communicate a tangible sense of interpretative awareness and convincing musicianship, will be expected.

FLCM in Jazz Performance. This diploma, the highest awarded by University of West London Qualifications, demands a truly exceptional demonstration of performing ability of the very highest standard. In order to pass, the candidate must present a recital of a standard which one might expect to hear at a major jazz festival or a prestigious jazz venue, demonstrating a clear maturity of personality and interpretation. The standard expected is equivalent to that of a Masters' level recital.

2.3 Pre-requisite qualifications

DipLCM and ALCM in Jazz Performance. The candidate must have already passed one of the following:

- Grade 5 theory (LCM Theory of Music or Popular Music Theory, ABRSM, TCL or GSMD);
- GCSE or O level music (Grade C or above);
- CSE music (Grade 1);
- AS, A2 or A level music (Grade D or above);
- Scottish Certificate of Education (Standard or Higher);
- Junior or Leaving Certificate (Republic of Ireland).

Other qualifications may be considered on application to the Chief Examiner in Music.

LLCM in Jazz Performance. Candidates must have passed the ALCM in Jazz Performance in the same instrument. Other qualifications may be considered on application to the Chief Examiner in Music.

Candidates who feel they have relevant professional experience, and have attained the appropriate standard of performance, may apply to enter directly for LLCM without holding previous qualifications. Such a candidate would be expected to have secured *local or regional recognition* as a professional performer. Such an application must be made in writing to the Chief Examiner in Music, outlining the rationale for entering directly at this level, accompanied by evidence in the form of press cuttings, reviews, concert programmes, etc., and supported by at least two references from professional musicians, who must NOT be the candidate's teacher.

FLCM in Jazz Performance. Candidates must have passed the LLCM in Jazz Performance in the same instrument. Other qualifications may be considered on application to the Chief Examiner in Music.

Candidates who feel they have relevant professional experience, and have attained the appropriate standard of performance, may apply to enter directly for FLCM without holding previous qualifications. Such a candidate would be expected to have secured *national or international recognition* as a professional performer. Such an application must be made in writing to the Chief Examiner in Music, outlining the rationale for entering directly at this level, accompanied by evidence in the form of press cuttings, reviews, concert programmes, CD recordings, etc., and supported by at least two references from professional musicians, who must NOT be the candidate's teacher.

2.4 Description of examination components

2.4.1 Jazz Piano: DipLCM

Component 1: Performance

70 marks

Candidates should introduce and perform a programme of approximately 20 minutes' duration. The pieces in the programme may be selected by the candidate. Although candidates may wish to focus on a particular style or influence, the programme should reflect some variety. As a guide, four pieces could be offered.

One of the pieces may be a transcription or a study. This may be chosen by the candidate.

Candidates may opt to play one iconic vamp, as described in the ALCM syllabus below (Section 2.4.2, Component 2). This must be played from memory. A copy of the chord changes and an outline of the shape of the vamp should be given to the examiner.

Refer to the ALCM section (2.4.2, Component 3) for guidelines relating to the use of a second instrument or voice.

The transcription, study or vamp must NOT be chosen from the selection available in the LCM Jazz Grades syllabus.

The degree of difficulty should reflect the level of this qualification. Improvisational creativity, development of the language of jazz, awareness of the programme development and a sense of performance are essential in the programme.

Sample Programme 1

- a. A jazz waltz
- b. A jazz standard
- c. A transcription
- d. An own composition

Sample Programme 2

- a. An own composition, including improvisation (c.10 minutes)
- b. An iconic vamp
- c. A jazz standard

Component 2: Sight reading

15 marks

The sight reading test may be written in any jazz style. Small sections may require improvisation; however, chord indications will be given (eg. chord two in C major may appear as Dm7, D-7 or ii7).

Creative voicing is encouraged. Fluency, feel and rhythmic consistency are priorities, more so than including every written note.

One minute's preparation time will be given; during this time candidates may 'try out' small sections of the music, but they may not play the whole piece through from beginning to end.

Component 3: Discussion

15 marks

This will focus primarily on the programme performed in Component 1. Influences, styles and the musical fundamentals of the pieces (eg. chord symbol recognition, the form of a piece, etc.) may be discussed.

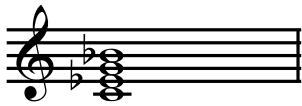
2.4.2 Jazz Piano: ALCM

Component 1: Technical work

10 marks

The technical work should be played from memory, with secure technique and fluency.

1. All major and minor scales (harmonic and melodic) and arpeggios to be played hands together or hands separately, legato, staccato, straight or swung, as requested by the examiner. Range: 4 octaves.
2. Left hand only: Exercise in 3rds and 7ths.
The basic device of this system is illustrated in Figure 1, and may be requested starting on any major 3rd through a complete circle of keys.



MINOR 7th

Cm7



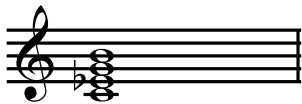
HALF DIMINISHED
(or minor 7th/flat 5th)

Cø or Cm7(b5)



DIMINISHED 7th
(or usually just
'diminished')

C°



MINOR/MAJOR 7th

Cm^Δ

* e.g.



C^Δ

C7

Component 2: Transcription or vamps

20 marks

Candidates should perform ONE transcription, of their own choice. The performance should include the Head (if applicable), as well as the transcribed solo.

Candidates may wish to make their own transcription from a recording. (A copy of the recording must be made available for the examiners.) Transcriptions do NOT have to be performed from memory. A copy of the transcription should be given to the examiners. Bass and drums may be added, to help authenticity. Candidates may wish to produce a backing track as an alternative to supporting players. Provision of sound equipment is the responsibility of the candidate. (Setting up time will need consideration.)

As an alternative to a transcription, candidates may wish to demonstrate their vamping skills in this section. Two iconic vamps should be chosen (eg. *Coral Keys*, Cedar Walton; *Killer Joe*, Benny Golson). Two full choruses should be played. The second chorus should include elements of fills and improvisation. A copy of the chart should be given to the examiners. It should show the chord changes and outline the shape of the vamp (similar to the illustration of *Killer Joe* (Benny Golson) in Figure 5, below). The vamps chosen must not be available in the LCM Jazz Grades syllabus.

This option is offered to encourage awareness of the role of the pianist in the rhythm section. This piece can be played as part of a rhythm section; however, please refer to the guidance on setting up in Section 2.1. If the vamps are chosen they must be played from memory. *Jerry Coker's Jazz Keyboard* (Belwin/Warner) may be a useful reference book. A copy of the original recording in which the vamp is used must also be made for reference by the examiners. It is the responsibility of the candidate to provide a CD player.

Figure 5: Iconic Vamps – *Killer Joe* (Benny Golson)

The musical notation consists of a piano introduction and four staves of chord progressions in 4/4 time. The introduction shows two measures of chords: C7(13) and Bb7(13). The first two staves show a sequence of C7(13) and Bb7(13) chords. The third staff is labeled 'Middle 8 (can be played more freely)' and shows a sequence of Eø, A7b9, Ebm, Ab7, A7, Ab7, Em, and A7b9. The fourth staff shows another sequence of C7 and Bb7 chords.

Component 3: Improvisations

45 marks

Candidates should present a 'set' of approximately 20 minutes' duration. At least two contrasting styles should be represented. Each piece should be introduced, as at a gig. As a guide, four pieces will help to offer a balanced programme.

Candidates should feel free to explore styles ranging from the blues and ragtime through to the contemporary. Own compositions are encouraged.

One piece may be performed on a second instrument, and/or the candidate may wish to add their own vocals (in the tradition of artists such as Diana Krall, Harry Connick Jr, Ray Charles, Jamie Cullum, Nina Simone and Michael Feinstein). Bass and drums may be added, to add authenticity. Backing tracks may also be used. Refer to the guidance on setting up in Section 2.1.

A horn player and/or singer may be added, on up to two pieces, so that the candidate's accompanying, comping, vamping and voicing skills can be assessed alongside improvisational skills.

Component 4: (a) Sight reading test, (b) Reading from a lead sheet

15 marks

(a) Sight reading test

The sight reading test may be written in any jazz style. Small sections may require improvisation; however, chord indications will be given (eg. chord two in C major may appear as Dm7, D-7 or ii7).

Creative voicing is encouraged. Fluency and rhythmic consistency are priorities, more so than including every written note.

One minute's preparation time will be given; during this time candidates may 'try out' small sections of the music, but they may not play the whole piece through from beginning to end.

(b) Reading from a lead sheet

Before the exam begins the candidate will be given a copy of a lead sheet (in the style of a Real Book or Aebersold book). Ten minutes will be given for study/practice. The style will be indicated by the examiner(s). Performance during the exam should include appropriate styling, and voicing, and the candidate may also wish to explore skills related to the rhythm section pianist (eg. comping, vamping, sympathetic fills, etc.).

Component 5: Discussion

10 marks

The candidate will discuss some, or all, of the following with the examiners. The discussion will relate primarily to the music performed. However, some broader, generalised elements may be approached.

- Stylistic and historical context
- The techniques required
- Form / formulae
- Rudiments (eg. chord relationships, chord symbols, scale patterns, intervals)
- Contrefact relationships
- Why the transcription / vamp was chosen
- Why the pieces in the programme were chosen
- Musical influences

2.4.3 Jazz Piano: LLCM

Component 1: Technical work

10 marks

This section should demonstrate fluency and stylistic detail.

1. The chords illustrated in Figure 4 at ALCM level are required in ALL keys, demonstrating an awareness of creative and appropriate voicings in major 7th and dominant 7th chords. This should be from memory. The examiners may ask for the selected chords in any order.
2. To improvise a melodic line over the chord sequence II - V - I (Figure 6). This may be requested as shown, or transposed up or down a tone, a perfect 4th or a perfect 5th. A copy of the exercise will be provided.

Figure 6 (example):

Figure 6 shows two staves of music. The first staff contains the following chord sequence: C, A^b7, Dm⁷, E⁷, Am⁷, Dm⁷, E, A⁷. The second staff contains the following chord sequence: Dm⁷, B^b7, C, C⁰, Dm⁷, G⁷, Cmaj⁷. Each chord is positioned above a staff with diagonal lines representing a melodic line.

3. Left Hand only. Candidates will be required to play the following pattern in any key:

Figure 7:

Figure 7 shows a bass clef staff with a key signature of one sharp (F#). The staff contains seven chords, each represented by a whole note chord symbol. The chords are labeled with Roman numerals: I, II, III, IV, III, II, I. The notes for each chord are: I (F#, C#, G#), II (F#, C#, G#), III (F#, C#, G#), IV (F#, C#, G#), III (F#, C#, G#), II (F#, C#, G#), I (F#, C#, G#).

4. Candidates will be required to play the chord/scale patterns in Figure 8, starting on any note (swung only). Range: 1 octave.

Figure 8:

- | | |
|------------------------|--|
| A: MAJOR 7th | Major scale, root to root |
| B: DOMINANT 7th | Major scale a perfect 4th above, root to root (MIXOLYDIAN) |
| C: MINOR 7th | Major scale a major 2nd below, root to root (DORIAN) |
| D: HALF DIMINISHED 7th | Major scale a minor 2nd above, root to root (LOCRIAN) |

Component 2: Transcriptions & vamps

20 marks

Candidates should perform TWO contrasting transcriptions, of their own choice. Transcriptions do NOT have to be played from memory.

Alternatively, candidates may perform ONE transcription and THREE iconic vamps. The three vamps must be played from memory, as described above in the ALCM syllabus (Section 2.4.2, Component 2). Copies of the charts and recordings should be given to the examiners (as outlined above for ALCM).

Component 3: Improvisations

45 marks

Candidates should present a 'set' of approximately 25 minutes' duration. As at a professional gig, presentation and programme building are important. These elements will be reflected in the marks. The programme may reflect variety, or follow a common theme. Candidates should feel free to explore any style, ranging from the blues and ragtime through to the contemporary.

Component 4: (a) Sight reading test, (b) Reading from a lead sheet

15 marks

(a) Sight reading test

The sight reading test may be written in any jazz style. Small sections may require improvisation; however, chord indications will be given (eg. chord two in C major may appear as Dm7, D-7 or ii7).

Creative voicing is encouraged. Fluency and rhythmic consistency are priorities, more so than including every written note.

One minute's preparation time will be given; during this time candidates may 'try out' small sections of the music, but they may not play the whole piece through from beginning to end.

(b) Reading from a lead sheet

Before the exam begins the candidate will be given a copy of a lead sheet (in the style of a Real Book or Aebersold book). Ten minutes will be given for study/practice. The style will be indicated by the examiner(s). Performance during the exam should include appropriate styling, and voicing, and the candidate may also wish to explore skills related to the rhythm section pianist (eg. comping, vamping, sympathetic fills, etc.).

Component 5: Discussion

10 marks

As for ALCM above, but a greater depth will be expected (eg. awareness of more complex chords). A good depth of knowledge relating to the styles represented in the programme is required.

2.4.4 Jazz Piano: FLCM

Candidates must perform a programme of the highest professional standard. Candidates must submit their programme to the Chief Examiner in Music for approval well before the closing date for entries. A copy of the approved programme and Chief Examiner's letter must also be enclosed with the examination entry.

The performance should be worthy of a major jazz festival or prestigious jazz venue. The programme should be varied and last approximately 45 minutes.

Candidates are encouraged to include an own composition within the programme. If an own composition is included, the score should be sent with the application, and marked for the attention of the Chief Examiner.

Support appropriate to the style (eg. rhythm section, backing tracks, big band, techno, etc.) must be provided by the candidate.

FLCM recitals may take place in front of an audience, provided that (a) this does not affect the normal examination procedure (ie. intervals, breaks, and the use of a compère are not permitted); and (b) this has been agreed in advance with the Chief Examiner in Music.

2.4.5 Jazz Wind & Brass: DipLCM

Component 1: Performance

70 marks

Candidates should introduce and perform a programme of approximately 20 minutes' duration. The pieces in the programme may be selected by the candidate. Although candidates may wish to focus on a particular style or influence, the programme should reflect some variety. As a guide, four pieces could be offered.

Candidates should refer to the ALCM Improvisations requirements (Section 2.4.6, Component 3). This section gives details of the flexibility allowed, including adding vocals and instrument doubling.

One of the pieces may be a transcription or a study. This may be chosen by the candidate.

The transcription or study must NOT be chosen from the selection available in the LCM Jazz Grades syllabus.

The degree of difficulty should reflect the level of this qualification. Improvisational creativity, development of the language of jazz, awareness of the programme development and a sense of performance are essential in the programme.

Sample Programme 1 (Saxophone)

- a. A study or transcription
- b. *Yardbird Suite* – Charlie Parker
- c. *Slang* – Michael Brecker
- d. A ballad

Sample Programme 2 (Trumpet)

- a. An own composition
- b. *A Night in Tunisia* – Dizzy Gillespie
- c. A transcription
- d. *Freddie Freeloader* – Miles Davis

Component 2: Sight reading

15 marks

The sight reading test may be written in any recognised jazz style.

One minute's preparation time will be given; during this time candidates may 'try out' small sections of the music, but they may not play the whole piece through from beginning to end.

Component 3: Discussion

15 marks

This will focus primarily on the programme performed in Component 1. Influences, styles and the musical fundamentals of the pieces (eg. chord symbol recognition, the form of a piece, etc.) may be discussed.

2.4.6 Jazz Wind & Brass: ALCM

Component 1: Technical work

10 marks

The technical work should be prepared from memory, slurred, legato tongued, staccato tongued and swung.

Candidates are encouraged to offer the scales and arpeggios in octaves rather than twelfths.

eg. Clarinet: starting on E, F, F# and G the range will be 3 octaves; all others 2 octaves.

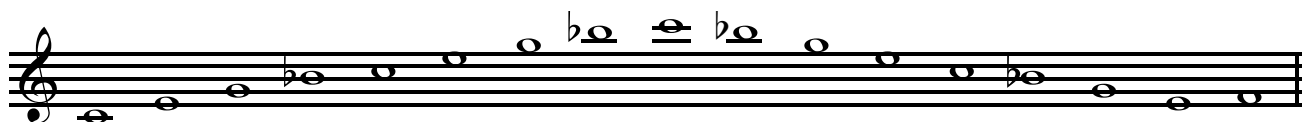
Flute: all 2 octaves except those starting on C, which will be 3 octaves.

Trumpet: range to high C.

Saxophone: B \flat to F, all 2 octaves. Others may be 1 octave, or 2 octaves if the candidate wishes to use the altissimo register.

1. All major and minor scales (harmonic or melodic or pure – *candidate's choice*) and arpeggios, within the compass of the instrument.
2. Chromatic scale, starting on any note.
3. Whole tone scales on C or C#.
4. Dominant 7ths in all keys resolving on the tonic.

eg. Dominant 7th of F:



5. Diminished 7ths on C, C# and D.
6. Dorian or Mixolydian modes (*candidate's choice*), starting on any note.
7. Blues scales, starting on any note.

For further information please refer to 'Scales for Jazz Improvisation' by Dan Haerle (see Section 3.3).

Component 2: Solo transcription

20 marks

Candidates should perform ONE transcription, of their own choice. The performance should include the Head (if applicable), as well as the transcribed solo.

Candidates may wish to make their own transcription from a recording. (A copy of the recording must be available for the examiners.)

A rhythm section or accompanist (piano / keyboard / guitar) may be added to help authenticity. Candidates may wish to use a backing track as an alternative to support players. Provision of sound equipment is the responsibility of the candidate. Refer to the guidance on setting up in Section 2.1.

Component 3: Improvisations

45 marks

Candidates should introduce and present a 'set' of approximately 20 minutes' duration. At least two contrasting styles should be represented. Each piece should be introduced, as at a gig. As a guide, four pieces might offer a balanced programme. Candidates should feel free to explore any style, ranging from blues and New Orleans to the contemporary.

One piece may be performed on a second instrument. Saxophonists and clarinetists may use more than one type of instrument. Trumpet players may also use the cornet or flugelhorn. The candidate may also offer a vocal chorus on one number (in the tradition of artists such as Curtis Stigers, Louis Armstrong and Jack Teagarden). Candidates are encouraged to fully exploit their creative instincts. Own compositions are encouraged.

The use of a rhythm section or accompanist (eg. piano / guitar) is welcome. Backing tracks may also be used, including self-produced tracks. Refer to the guidance on setting up in Section 2.1.

The following lists offer a starting point for programme building:

Sample Programme 1 (Saxophone)

- a. *When Lights are Low* – Benny Carter
- b. *Now's the Time* – Charlie Parker
- c. An own composition, eg. a jazz waltz (perhaps performed on a second instrument)
- d. *Lady Bird* – Tadd Dameron

Sample Programme 2 (Clarinet)

- a. *Wholly Cats* – Benny Goodman
- b. *Have You Met Miss Jones?* – Rodgers & Hart
- c. An own composition
- d. *Lady be Good* – George & Ira Gershwin

Sample Programme 3 (Flute)

- a. *There Will Never Be Another You* – Gordon & Warren
- b. *Waltz for Debby* – Bill Evans
- c. *Wave* – A C Jobim
- d. An own composition

Sample Programme 4 (Trumpet)

- a. *Milestones* – Miles Davis
- b. *I Remember Clifford* – Benny Golson
- c. An own composition
- d. *Footprints* – Wayne Shorter

Sample Programme 5 (Trombone)

- a. *Georgia on my Mind* – Hoagy Carmichael
- b. *Lady Bird* – Tadd Dameron
- c. *Sweet Georgia Brown* – Ben Bernie
- d. *Song for my Father* – Horace Silver

Charts are available, with backing tracks, through the Jamey Aebersold series (Jazzwise) and/or the Hal Leonard *Jazz Play Along* series. The *Real Books* also offer a good source of material.

Component 4: (a) Sight reading & improvisation test, (b) Short study

15 marks

(a) Sight reading & improvisation test

The sight reading may be in any recognised jazz style and may include a short improvised section. Chords will be indicated.

One minute's preparation time will be given; during this time candidates may 'try out' small sections of the music, but they may not play the whole piece through from beginning to end.

(b) Short study

Additionally, a short improvisation study will be given to the candidate 10 minutes before the start of the examination, consisting of a chord chart and CD backing track. The candidate is expected to provide their own CD player, so that the piece can be studied and a short head and improvisation developed, to be performed during the examination.

The performance should show awareness of, and reflect the stylistic and structural demands of, the outline.

At ALCM the short improvised study may be based on one of the following:

- a. Blues
- b. II – V – I patterns
- c. Modal

The example and the CD must be returned to the examiners at the conclusion of the examination.

Component 5: Discussion

10 marks

The candidate will discuss some, or all, of the following with the examiners. The discussion will relate primarily to the programme. However, some broader, generalised elements may be approached.

- Stylistic and historical context
- The techniques required
- Form / formulae
- Rudiments (eg. chord relationships, chord symbols, scale patterns, intervals)
- Contrefact relationships
- Why the transcription was chosen
- Why the pieces in the programme were chosen
- Musical influences

2.4.7 Jazz Wind & Brass: LLCM

Component 1: Technical work

10 marks

This work should be played from memory, slurred, legato tongued, staccato tongued and swung. Ranges are as outlined in the technical requirements for ALCM (Section 2.4.6, Component 1).

1. Diminished scales, starting on the half step or the whole step (*candidate's choice*), starting on any note.
2. Blues scales on any note.
3. The Lydian $\flat 7$ scale (Lydian Dominant) OR the Super Locrian scale (Diminished Whole Tone scale) OR the Lydian Augmented scale (+4 +5), all starting on any note. The candidate must offer two of the three scale types.
4. Augmented scales on C, C#, D and E \flat .

For further information please refer to 'Scales for Jazz Improvisation' by Dan Haerle (see Section 3.3).

Component 2: Solo transcriptions

20 marks

Requirements are as for ALCM, above. However, TWO contrasting transcriptions should be performed.

Component 3: Improvisations

45 marks

Candidates should introduce and present a 'set' of approximately 25 minutes' duration. As at a professional gig, presentation and programme building are important. These elements will be reflected in the marks. The programme may reflect variety or follow a common theme. Candidates should feel free to explore any style, ranging from the blues and New Orleans to the contemporary. Candidates with doubling and/or vocal skills may wish to explore these areas (as outlined above for ALCM).

Sample Programme 1

- a. *Some Skunk Funk* – Randy Brecker
- b. An own composition in a funk style
- c. *Impressions* – John Coltrane
- d. *Nardis* – Miles Davis
- e. *Shirley* – Stanley Turrentine

Sample Programme 2

- a. *Groovin' High* – Dizzie Gillespie
- b. *All the Things You Are* – Kern / Hammerstein
- c. *Lover Man* – Davis / Ramirez
- d. *Crisis* – Freddie Hubbard
- e. *Ceora* – Lee Morgan

Sample Programme 3

- a. *Stompin' at the Savoy* – Edgar Sampson
- b. *Indiana* – Hanley / McDonald
- c. An own composition
- d. *Bluesette* – Gimbel / Thielemans
- e. *Afternoon in Paris* – John Lewis

Sample Programme 4

- a. *Confirmation* – Charlie Parker
- b. An own composition (in bebop style)
- c. *Samantha* – Sammy Nestico
- d. *Rush Hour* – Lennie Niehaus
- e. *Anthropology* – Charlie Parker

For suggested publications, refer to the ALCM guidelines above (Section 2.4.6, Component 3).

Component 4: (a) Sight reading & improvisation test, (b) Short study

15 marks

(a) Sight reading & improvisation test

The sight reading may be in any recognised jazz style and may include a short improvised section.

One minute's preparation time will be given; during this time candidates may 'try out' small sections of the music, but they may not play the whole piece through from beginning to end.

(b) Short study

Additionally, a short improvisation study will be given to the candidate 10 minutes before the start of the examination, consisting of a chord chart and CD backing track. The candidate is expected to provide their own CD player, so that the piece can be studied and a short head and improvisation developed, to be performed during the examination.

The performance should show awareness of, and reflect the stylistic and structural demands of, the outline.

At LLCM the short improvised study may be based on one of the following:

- a. Blues
- b. Latin
- c. Fusion
- d. Jazz Waltz

The example and the CD must be returned to the examiners at the conclusion of the examination.

Component 5: Discussion

10 marks

As for ALCM. Greater depth will be expected (eg. awareness of more complex chords). A good depth of knowledge relating to the styles represented in the programme is required.

2.4.8 Jazz Wind & Brass: FLCM

Candidates must perform a programme of the highest professional standard. Candidates must submit their programme to the Chief Examiner in Music for approval well before the closing date for entries. A copy of the approved programme and Chief Examiner's letter must also be enclosed with the examination entry.

The performance should be worthy of a major jazz festival or prestigious jazz venue. The programme should be varied and last approximately 45 minutes.

Candidates are encouraged to include an own composition within the programme. If an own composition is included, the score should be sent with the application, and marked for the attention of the Chief Examiner.

Support appropriate to the style (eg. rhythm section, backing tracks, big band, techno, etc.) must be provided by the candidate.

FLCM recitals may take place in front of an audience, provided that (a) this does not affect the normal examination procedure (ie. intervals, breaks, and the use of a compère are not permitted); and (b) this has been agreed in advance with the Chief Examiner in Music.

2.5 Weightings for examination components

DipLCM:

Performance	Sight Reading	Discussion
70%	15%	15%

ALCM and LLCM:

Technical Work	Transcription(s)	Improvisations	Tests	Discussion
10%	20%	45%	15%	10%

FLCM:

Assessed as 'Approved' or 'Not Approved'.

3. Resources

Candidates are encouraged to explore the many avenues available, including published transcriptions, transcribing recordings, and legal download facilities.

A useful starting point for pianists is *The Soul of Blues, Stride & Swing Piano* by Riccardo Scivales (Ekay Music).

Wise / Music Sales publishes a series called *Artist Transcriptions* for trumpet, clarinet, alto and tenor saxophone and piano.

3.1 Discography

The short discography below offers a starting point for transcribing from recordings:

Piano

Dave Brubeck	Greatest Hits
Chick Corea	Light as a Feather
Chick Corea	Now He Sings, Now He Sobs
Bill Evans	Autumn Leaves
Errol Garner	Misty
Dave Grusin	The Gershwin Collection
Herbie Hancock	Maiden Voyage
Herbie Hancock	The Best of Herbie Hancock
Herbie Hancock	The Prisoner
James P Johnson	Piano Solos (1921-1926)
Thelonious Monk	Monk & Trane
Bud Powell	Collection
Bud Powell	The Amazin' Bud Powell
George Shearing	Live at the Café Carlyle
Horace Silver	Song for my Father
Horace Silver	The Cape Verdean Blues
Art Tatum	Pure Genius
McCoy Tyner	The Real McCoy
Fats Waller	Ain't Misbehavin'
Teddy Wilson	Air Mail Special

Flute

Eric Dolphy	Out to Lunch [also alto sax & bass clarinet]
Jan Garbarek	Wayfarer [also soprano sax]
Tubby Hayes & Roland Kirk	Return Visit [also tenor sax]
Paul Horn	Black and White Box of Jazz
Yusef Lateef	The Diverse
Herbie Mann	Brazilian Soft Shoe
Bob Mintzer	Incredible Journey [also saxes, clarinet]
Wolfgang Puschnig	Carla Bley – Appearing Nightly
Tom Scott	The Spirit Feel [also saxes]
Bud Shank	Live at the Haig [also alto sax]

Clarinet

Eddie Daniels	Collection
Kenny Davern	My Inspiration
Buddy DeFranco	Buddy DeFranco and Oscar Peterson Play George Gershwin
Johnny Dodds, Pee Wee Russell & Peanuts Hucko	The Great Clarinetists
Jimmy Giuffre	Free Fall
Benny Goodman	Benny Goodman at His Best
Woody Herman	Greatest Hits
Ken Peplowski	Easy to Remember
Artie Shaw	The Best of Artie Shaw

Soprano Saxophone

Sidney Bechet	Bechet of New Orleans
Bob Wilber	Reflections

Alto Saxophone

Cannonball Adderley	At the Lighthouse
Cannonball Adderley	Something Else
Cannonball Adderley	Takes Charge
Ornette Coleman	Something Else!
Ornette Coleman	This is Our Music
Ornette Coleman	Town Hall Concert
Johnny Hodges	Jeep's Blues
Charlie Parker	Jazz at Massey Hall
Charlie Parker	Now's the Time
Charlie Parker	The Savoy Recordings
Charlie Parker	The Verve Years
David Sanborn	Chicago Song
Sonny Stitt	Constellation
Sonny Stitt	The Stitt / Rollins Session
Phil Woods	Bouquet

Tenor Saxophone

John Coltrane	A Love Supreme
John Coltrane	Blue Train
John Coltrane	Giant Steps
John Coltrane	Impressions
John Coltrane	Live at Birdland
John Coltrane	More Lasting than Bronze
Stan Getz	'Round Midnight
Coleman Hawkins	Bluesy Burrell
Joe Henderson	Inner Urge
Joe Henderson	Live in Japan
Roland Kirk	We Free Kings
Oliver Nelson	The Blues and the Abstract Truth
Sonny Rollins	Newk's Time
Sonny Rollins	Now's the Time
Sonny Rollins	Saxophone Colossus
Wayne Shorter	Speak No Evil
Sonny Stitt	Constellation
Ben Webster	Stormy Weather
Lester Young	Lester Leaps In

Baritone Saxophone

Harry Carney	[many Duke Ellington recordings]
Gerry Mulligan	Walk on the Water

Trumpet

Louis Armstrong	The Essential
Chet Baker	The Touch of Your Lips
Clifford Brown	Brown & Roach Inc.
Clifford Brown	Brownie Eyes
Clifford Brown	Clifford Brown with Strings
Clifford Brown	Study in Brown
Miles Davis	Kind of Blue
Miles Davis	Miles Davis
Miles Davis	Milestones
Miles Davis	My Funny Valentine
Miles Davis	Seven Steps to Heaven
Dizzy Gillespie	Gettin' Dizzy
Freddie Hubbard	Keep Your Soul Together
Freddie Hubbard	Ready for Freddie
Freddie Hubbard	Sky Dive
Wynton Marsalis	Standard Time
Lee Morgan	Cornbread

Trombone

Vic Dickenson	Showcase
Tommy Dorsey	Tommy and Jimmy Dorsey
Urbie Green	Urbie Green and 21 Trombones
Slide Hampton	The Fabulous
Slyde Hyde	Jazz Standards
J J Johnson	The Eminent J J Vol.1 & Vol.2
J J Johnson / Kai Winding	The Great Kai and J J
Kid Ory	Muskrat Ramble
Benny Powell	The Heath Brothers – Jazz Family
Jack Teagarden	King of the Blues Trombone
Dicky Wells	Dicky Wells in Paris

3.2 Suggestions for listening and transcriptions

Ballads

Blue in Green	I Got It Bad	Misty	Sophisticated Lady
Body and Soul	I Remember Clifford	My Foolish Heart	Summertime
But Beautiful	In a Sentimental Mood	My Funny Valentine	When I Fall in Love
Coral	Infant Eyes	Naima	When Sunny Gets Blue
Crystal Silence	It Could Happen to You	Peace	Yesterdays
Fall	Lament Fall	Prelude to a Kiss	
Here's that Rainy Day	Lover Man	'Round Midnight	
I Can't Get Started	Lush Life	Search for Peace	

Bebop Tunes (II-V-I)

Afternoon in Paris	Four	Moment's Notice	Stablemates
Airegin	Giant Steps	Nardis	Tune-Up
Along Came Betty	Grand Central	Nica's Dream	Well, You Needn't
Anthropology	Groovin' High	Night in Tunisia	Whisper Not
Cherokee	Half Nelson	Oleo	Woody 'n You
Confirmation	Have You Met Miss Jones?	Ornithology	Yardbird Suite
Countdown	Jeannine	Scrapple from the Apple	
Donna Lee	Killer Joe	Softly, as in a Morning Sunrise	
Doxy	Lazy Bird	Solar	

Blues Lines

Au Privave	Blue Seven	Freddie the Freeloader	Straight, No Chaser
Bags' Groove	Blue Train	Isotope	Traneing In
Barbados	Blues by Five	Israel	Vierd Blues
Bass Blues	Blues for Alice	Mr PC	Walkin'
Bessie's Blues	Cousin Mary	Now's the Time	
Billie's Bounce	Dr Jackel	Some Other Blues	
Blue Monk	Equinox	Sonnymoon for Two	

Bossa Novas

500 Miles High	How Insensitive	Quiet Nights of Quiet Stars	The Shadow of Your Smile
Carnival	Meditation	Recorda-Me	Triste
Ceora	O Grande Amor	Solar Flair	Watch What Happens
Coral Keys	Once I Loved	Song for My Father	Wave
Desafinado	Pensativa	The Girl from Ipanema	

Fusion / Funk

Birdland	East River	Funk the Dumb Stuff	Run for Cover
Diggin' on James Brown	Freezing Fire	Funky Sea, Funky Dew	Straphangin'

Jazz Originals

Con Alma	Falling Grace	Freedom Jazz Dance	Seven Steps to Heaven
Dolphin Dance	Forest Flower	Molten Glass	Shades of Light
ESP	Fortune Smiles	Nefertiti	

Jazz Standards

All the Things You Are	I Remember You	On Green Dolphin Street	There Will Never Be Another You
End of a Love Affair	In a Mellow Tone	Out of Nowhere	What's New
Getting Sentimental Over You	Invitation	Satin Doll	What is This Thing Called Love?
How High the Moon	It's You or No one	Star Eyes	Wine and Roses
I'll Remember April	Just Friends	Stella by Starlight	You Stepped Out of a Dream
I Love You	My Romance	Take the 'A' Train	

Modal Tunes

All Blues	Hummin'	Little Sunflower	So What
Atlantis	Impressions	Maiden Voyage	Straight Life
Cantaloupe Island	Joshua	Milestones	Witch Hunt
Genesis	Las Vegas Tango	Nutville	

Sambas

Captain Marvel	One Note Samba	Spain	St Thomas
----------------	----------------	-------	-----------

Waltzes (3/4)

A Child is Born	Bluesette	My Favourite Things	Waltz for Debby
Alice in Wonderland	Elsa	Someday My Prince Will Come	West Coast Blues
All Blues	Floating	Tenderly	What Was
Beautiful Love	Fly Me to the Moon	Up Jumped Spring	Windows
Black Narcissus	Footprints	Valse Hot	
Blue Daniel	La Fiesta	Very Early	

3.3 Useful reference material

Jamey Aebersold	How To Play Jazz And Improvise (Volume 1)	<i>(Jazzwise)</i>
Jamey Aebersold	The Scale Syllabus (Volume 26)	<i>(Jazzwise)</i>
David Baker	How to Play Bebop	<i>(Alfred)</i>
David Baker	Jazz Improvisation	<i>(Alfred)</i>
Jerry Coker	Jazz Keyboard	<i>(Alfred)</i>
Rodney Dale	Teach Yourself Jazz	<i>(Teach Yourself Books)</i>
Lee Evans	The Rhythms of Keyboard Jazz	<i>(Hal Leonard)</i>
Andrew D Gordon	14 Contemporary Styles	<i>(A D G Productions)</i>
Lionel Grigson (ed.)	A Charlie Parker Study Album	<i>(Novello)</i>
Dan Haerle	Scales for Jazz Improvisation: a Practice Method for All Instruments	<i>(Alfred)</i>
Dan Haerle	The Jazz Language: a Theory Text for Jazz Composition and Improvisation	<i>(Warner Bros.)</i>
Mark Levine	The Jazz Piano Book	<i>(Sher Music)</i>
Ramon Ricker	Pentatonic Scales for Jazz Improvisation	<i>(Alfred)</i>

4. Assessment

4.1 How marks are awarded

With the exception of the FLCM, the examiner will award a mark for each component of the examination. At the discretion of the examiner, the mark for performance components may be subdivided into marks for individual pieces played. The following criteria will be taken into account:

DipLCM in Jazz Performance

Component 1: Performance

Assessment Domains	Approximate weighting
Technical Accomplishment: the ability to manipulate the instrument, as appropriate to the repertoire, with respect to accuracy, fluency, articulation, intonation, breath control, fingering, tonal variety and/or consistency, dexterity, tempo, dynamics.	20%
Musicality: the ability to make sensitive and musical performance decisions, resulting in a sense of individual interpretative skill, so that the music is performed in a manner reflecting a degree of sensitivity and empathy, and an emerging musical personality; the ability to adapt to a variety of styles as may be required by the choice of repertoire.	30%
Communication: evidence of a perceptive understanding of how to engage the listener, and to communicate the musical substance of the repertoire.	30%
Presentation: evidence of attention to platform skills and appropriate concert etiquette.	10%
Programming: balance, originality and creativity demonstrated in choice and appropriateness of programme.	10%

Component 2: Sight reading

Assessment Domains	Approximate weightings
Technical Accomplishment: the ability to perform the given extract accurately, with secure technique as appropriate to the instrument.	30%
Musicality: the ability to make sensitive and musical performance choices in relation to the given extract.	30%
Communication: the ability to give a convincing and confident overall account of the extract.	40%

Component 3: Discussion

Assessment Domains	Approximate weightings
Rudiments: a thorough understanding of all notational aspects of the pieces performed.	25%
Analysis: an understanding of formal, structural, tonal, harmonic, melodic and rhythmic structures, relating to the pieces performed.	25%
Background knowledge of the composers and performers of the pieces.	25%
Personal response of the candidate to learning and performing the music.	25%

ALCM in Jazz Performance

Component 1: Technical work

Assessment Domains	Approximate weightings
Technical Accomplishment: accuracy, fluency, variation in articulation, intonation, breath control, fingering, consistency and quality of tone, dexterity, appropriate tempo, variation in dynamics (all as appropriate to instrument); prompt response to examiner's instruction.	65%
Musicality: musical shape, phrasing.	15%
Musical Knowledge: pitch content of specified scales/chords.	20%

Component 2: Transcription

Assessment Domains	Approximate weighting
Technical Accomplishment: the ability to manipulate the instrument, as appropriate to the repertoire, with respect to accuracy, fluency, articulation, intonation, breath control, fingering, tonal variety and/or consistency, dexterity, tempo, dynamics.	20%
Musicality: the ability to make sensitive and musical performance decisions, resulting in a sense of individual interpretative skill, so that the music is performed in a manner reflecting a degree of sensitivity and empathy, and an emerging musical personality; the ability to adapt to a variety of styles as may be required by the choice of repertoire.	30%
Communication: evidence of a perceptive understanding of how to engage the listener, and to communicate the musical substance of the repertoire.	30%
Presentation: evidence of attention to platform skills and appropriate concert etiquette.	10%
Programming: balance, originality and creativity demonstrated in choice and appropriateness of programme.	10%

Component 3: Improvisations

Assessment Domains	Approximate weighting
Technical Accomplishment: the ability to manipulate the instrument, as appropriate to the repertoire, with respect to accuracy, fluency, articulation, intonation, breath control, fingering, tonal variety and/or consistency, dexterity, tempo, dynamics.	20%
Musicality: the ability to make sensitive and musical performance decisions, resulting in a sense of individual interpretative skill, so that the music is performed in a manner reflecting a degree of sensitivity and empathy, and an emerging musical personality; the ability to adapt to a variety of styles as may be required by the choice of repertoire.	30%
Communication: evidence of a perceptive understanding of how to engage the listener, and to communicate the musical substance of the repertoire.	30%
Presentation: evidence of attention to platform skills and appropriate concert etiquette.	10%
Programming: balance, originality and creativity demonstrated in choice and appropriateness of programme.	10%

Component 4: Sight reading test; Reading from a lead sheet / Short study

Assessment Domains	Approximate weightings
Technical Accomplishment: the ability to perform the given extract accurately, with secure technique as appropriate to the instrument.	30%
Musicality: the ability to make sensitive and musical performance choices in relation to the given extract.	30%
Communication: the ability to give a convincing and confident overall account of the extract.	40%

Component 5: Discussion

Assessment Domains	Approximate weightings
Rudiments: a thorough understanding of all notational aspects of the pieces performed.	25%
Analysis: an understanding of formal, structural, tonal, harmonic, melodic and rhythmic structures, relating to the pieces performed.	25%
Background knowledge of the composers and performers of the pieces.	25%
Personal response of the candidate to learning and performing the music.	25%

LLCM in Jazz Performance

Component 1: Technical work

Assessment Domains	Approximate weightings
Technical Accomplishment: accuracy, fluency, variation in articulation, intonation, breath control, fingering, consistency and quality of tone, dexterity, appropriate tempo, variation in dynamics (all as appropriate to instrument); prompt response to examiner's instruction.	65%
Musicality: musical shape, phrasing.	15%
Musical Knowledge: pitch content of specified scales/chords.	20%

Component 2: Transcriptions

Assessment Domains	Approximate weighting
Technical Accomplishment: the ability to manipulate the instrument, as appropriate to the repertoire, with respect to accuracy, fluency, articulation, intonation, breath control, fingering, tonal variety and/or consistency, dexterity, tempo, dynamics.	20%
Musicality: the ability to make sensitive and musical performance decisions, resulting in a sense of individual interpretative skill, so that the music is performed in a manner reflecting a degree of sensitivity and empathy, and an emerging musical personality; the ability to adapt to a variety of styles as may be required by the choice of repertoire.	30%
Communication: evidence of a perceptive understanding of how to engage the listener, and to communicate the musical substance of the repertoire.	30%
Presentation: evidence of attention to platform skills and appropriate concert etiquette.	10%
Programming: balance, originality and creativity demonstrated in choice and appropriateness of programme.	10%

Component 3: Improvisations

Assessment Domains	Approximate weighting
Technical Accomplishment: the ability to manipulate the instrument, as appropriate to the repertoire, with respect to accuracy, fluency, articulation, intonation, breath control, fingering, tonal variety and/or consistency, dexterity, tempo, dynamics.	20%
Musicality: the ability to make sensitive and musical performance decisions, resulting in a sense of individual interpretative skill, so that the music is performed in a manner reflecting a degree of sensitivity and empathy, and an emerging musical personality; the ability to adapt to a variety of styles as may be required by the choice of repertoire.	30%
Communication: evidence of a perceptive understanding of how to engage the listener, and to communicate the musical substance of the repertoire.	30%
Presentation: evidence of attention to platform skills and appropriate concert etiquette.	10%
Programming: balance, originality and creativity demonstrated in choice and appropriateness of programme.	10%

Component 4: Sight reading test; Reading from a lead sheet / Short study

Assessment Domains	Approximate weightings
Technical Accomplishment: the ability to perform the given extract accurately, with secure technique as appropriate to the instrument.	30%
Musicality: the ability to make sensitive and musical performance choices in relation to the given extract.	30%
Communication: the ability to give a convincing and confident overall account of the extract.	40%

Component 5: Discussion

Assessment Domains	Approximate weightings
Rudiments: a thorough understanding of all notational aspects of the pieces performed.	25%
Analysis: an understanding of formal, structural, tonal, harmonic, melodic and rhythmic structures, relating to the pieces performed.	25%
Background knowledge of the composers and performers of the pieces.	25%
Personal response of the candidate to learning and performing the music.	25%

FLCM in Jazz Performance

Assessment Domains	Approximate weighting
Technical Accomplishment: the ability to manipulate the instrument, as appropriate to the repertoire, with respect to accuracy, fluency, articulation, intonation, breath control, fingering, tonal variety and/or consistency, dexterity, tempo, dynamics.	20%
Musicality: the ability to make sensitive and musical performance decisions, resulting in a clear individual interpretative skill, so that the music is performed in a sensitive and empathetic manner, and with a clear, confident and authoritative sense of musical personality; the ability to adapt to a variety of styles as may be required by the choice of repertoire.	30%
Communication: evidence of a perceptive understanding of how to engage the listener, and to communicate the musical substance of the repertoire with subtlety and authority.	30%
Presentation: evidence of attention to platform skills and appropriate concert etiquette.	10%
Programming: balance, originality and creativity demonstrated in choice and appropriateness of programme.	10%

5. Awarding and reporting

5.1 Issue of results

A written report will be compiled for each examination. Candidates will be informed of the result of practical examinations as soon as possible, and not later than four weeks after the examination date, by post. Representatives are not allowed to issue results over the telephone. Certificates for successful candidates are normally dispatched within eight weeks of the date of the examination, but very often they will be received sooner than this. This time is necessary to ensure that all results are properly standardised and have been checked by LCM Examinations. (See *Regulation 27.*)

5.2 Awards

For DipLCM, ALCM and LLCM, candidates must attain an overall minimum mark of 75% in order to pass the examination and for the diploma to be awarded. (See *Section 5.3, 'Repeats of examinations'.*)

The FLCM diploma is assessed as 'Approved' or 'Not Approved'.

Candidates who successfully complete a Diploma in Jazz Performance are permitted to append the letters 'DipLCM', 'ALCM', 'LLCM' or 'FLCM', as appropriate, to their name.

5.3 Repeats of examinations

Where a candidate is not able to reach the minimum standard for a pass in an examination, application for re-examination is permitted, upon payment of the current entry fee.

All examination components must be completed on re-examination.

6. Regulations and information

These regulations cover all examinations in Music Performance, Music Theatre, and Music Literacy (Theory). They do NOT cover examinations administered in partnership with the Registry of Guitar Tutors or the Examinations Registry, although some information concerning Popular Music Theory is included below.

1. **Validity of syllabus:** Please refer to individual syllabuses and repertoire lists for the dates when each syllabus or repertoire list may be used.
2. **Examination dates (Public centres):** Practical examinations take place throughout the year according to location. In the UK and Ireland, practical examinations are held three times a year at public centres: Spring (March/April), Summer (June/July) and Winter (November/December). The dates when each year's sessions begin and end are published in the preceding autumn. Overseas candidates should contact their local representative for details of examination dates. Associate, Licentiate and Fellowship diplomas may only be taken at a recognised Diploma Centre. Please contact the LCM Examinations Office or consult the website (uwl.ac.uk/lcmexams) for details of your nearest representative.
3. **Examination dates (Private centres):** Examinations are conducted at schools, colleges and private teaching studios where preparation for LCM Examinations supports and complements the course, provided there are sufficient entries to make the visit viable, and any venue-related costs are covered by the applicant. Exams may be held at any time at private centres. The co-ordinating teacher is responsible for timetabling the examination day. Please contact LCM Examinations for further details.
4. **Examination dates (Theory):** Written examinations are held in March, June and December each year. Theoretical Diplomas are held in June only. Exact dates are printed on the entry forms.
5. **Entry procedure:** Closing dates for entry, for each examination session, are listed on the Entry Forms. Overseas candidates should consult their local representative for the closing dates. Entries must be submitted to the local representative of the Centre where the candidate wishes to take the exam; NOT centrally to the LCM Examinations Office. Entries may not be submitted by fax. Please note that, while LCM Examinations will make every effort to accommodate requests for practical exam dates, no guarantee can be made that such requests will be met.
Classical Guitar Exams: Step and Grade examination entries must be submitted to LCM Examinations on an original Registry of Guitar Tutors entry form, found in the back of the Handbook for each grade. This is the only method of obtaining a valid entry form. Handbooks may be ordered from the Registry of Guitar Tutors. Exceptions are made for 'siblings' and 're-entry'; special forms are available from LCM Examinations.
Popular Music Theory: Entries must be submitted to the Examinations Registry on an original Examinations Registry entry form, found in the Handbook for each grade. This is the only method of obtaining a valid entry form. Handbooks may be ordered from the Examinations Registry. Exceptions are made for 'siblings' and 're-entry'; special forms are available from LCM Examinations.
6. **Late entries:** These may be accepted up to seven days after the last date of entry. Each entry must be accompanied by the current late fee for each candidate. No entry will be accepted if it is received at a later date.
7. **Conditions of entry:** LCM Examinations reserves the right to refuse entry to any candidate without giving a reason. The right to postpone or cancel the entry of any candidate is reserved. Entries are accepted subject to the regulations stated in this syllabus. Entry for examination constitutes an agreement on the part of the candidate to abide by the regulations.
8. **Fees:** A complete table of current UK examination fees is printed on the examination entry forms each year. Overseas fees are obtainable from the regional representative. Cheques, bankers' drafts, etc. must be made payable to University of West London. Fees cannot be refunded, nor entries postponed to a later examination session. Candidates not attending examinations for which they have entered, unless for a reason covered under the Special Considerations policy (*see Regulation 34*), will forfeit their fees.
Popular Music Theory: A list of current fees is printed by the Examinations Registry each year. Cheques, bankers' drafts, etc. must be made payable to the Examinations Registry.
9. **Pre-requisite qualifications (approved prior learning):** Candidates may enter for any graded examination without having taken any preceding examination, except candidates entering for Practical Grade 8 (all endorsements except Pop Vocals, Music Theatre, and Irish and Scottish Traditional Music) who must hold Grade 5 or higher in Music Theory from LCM Examinations, ABRSM, or Trinity/Guildhall. Acceptable alternatives to Grade 5 theory are as follows: A, B or C pass in music in the GCSE (or GCE O Level); CSE Grade 1; Scottish Certificate of Education (Standard or Higher Grade); Junior or Leaving Certificate in the Republic of

Ireland; RCT Grade 2 Rudiments in Canada. There is no theory pre-requisite for Proficiency Leisure Play. Details of pre-requisite qualifications for diplomas are outlined in full in the relevant syllabuses.

10. **Substitutions:** Only candidates officially entered will be accepted for examination. Substitution of a candidate in place of a candidate originally entered will not be allowed.
11. **Transfers:** Transfer of candidates from one centre to another will not be considered unless there are exceptional circumstances which have been approved prior to the transfer by LCM Examinations. Transfers will only be administered on receipt of the transfer fee.
12. **Examination appointments:** An Attendance Notice detailing the date, time and venue of the examination will be issued to each candidate, via the correspondence address on the entry form, not later than two weeks before the date of the examination. This should be retained by the candidate, and handed to the attendant on the day of the examination. LCM Examinations should be informed immediately if there are any errors on the Attendance Notice. An incorrect grade or subject cannot be changed on the day of the exam, and spelling corrections will incur a fee if notified after the issue of the certificate. Candidates should arrive at the venue no later than 15 minutes before the scheduled time of the examination.
13. **Conditions at public centres:** A quiet room will be provided. Every effort will be made to ensure that the candidate is not disturbed by outside noise. The room will be of a moderate size, but with sufficient room to enable candidates to perform effectively. A good quality, tuned piano, with a stool, will be provided. A music stand will be provided for instrumentalists. Guitarists should bring their own footstool. Electronic Keyboard candidates should bring their own keyboard stand, if required; however, a table and power source will be provided. A waiting room will be provided, and a warm-up room where available.
14. **Digital pianos:** Good quality digital pianos may be used for examinations up to Grade 8 level. They may NOT be used for diplomas (except Jazz, Music Theatre, and Irish and Scottish Traditional diplomas). Where a digital piano is used, centres must inform all candidates and/or teachers at the time of entry.
15. **Examination procedure:** The examination components will normally be conducted in the order shown in the syllabus, unless the candidate requests otherwise. Examiners will normally offer a brief warm-up period of approximately 1 minute to candidates taking Grade 5 or higher. Where other candidates require warm-up time, the examiner should be informed accordingly. For sight-reading components, candidates will be given approximately one minute's preparation time, during which they may study and try out short sections of the extract, but they may not play the complete extract through until asked to do so by the examiner. (NB. This does not apply to tests in Electronic Keyboard and Organ examinations, where different guidelines apply).
16. **Admission to the examination room:** Practical examinations are conducted in closed conditions. No-one, apart from the candidate and the examiner(s), is allowed into the examination room *with the following exceptions:*
 - (a) an accompanist, who may be present *only* for those parts of the examination where they are required;
 - (b) for candidates aged 12 and under who are using pre-recorded backing tracks, an adult operating the playback equipment, who may be present *only* for those parts of the examination where they are required (see Regulation 23);
 - (c) an approved person, such as a parent or teacher, in Early Learning or Pre Preparatory examinations;
 - (d) an approved person, such as a parent or teacher, or a language interpreter, where this concession has been granted prior to the examination as the result of a request for reasonable adjustments for a candidate with particular needs (see Regulation 35);
 - (e) a chaperone for Music Theatre candidates (see *Music Theatre syllabus guidelines*);
 - (f) an audience for FLCM recitals (see *individual syllabuses for further guidelines*);
 - (g) an instrumental or vocal ensemble for Conducting examinations.Page-turners are NOT allowed, unless in exceptional circumstances, and with prior approval from LCM Examinations. (Please see Regulation 22a below).
17. **Use of music in examinations:** With the exception of certain examinations (see below), candidates must use published editions of all music performed in the examination, whether published by LCM Examinations or by other publishers. Where a certain published edition is listed in the syllabus repertoire, candidates may use any alternative published edition of the music, provided that this is not a simplified version. Candidates should ensure that they have obtained all the necessary music before submitting an entry. Where a candidate wishes, or is required, to perform from memory (e.g. in Music Theatre exams), published editions of the music must still be available for the examiner's reference. Diploma candidates must bring additional copies of the music for the examiners' reference; photocopies may be used for this purpose. *NB. Candidates are not required to use or provide published editions in the following examinations: Popular Music Vocals, Irish and Scottish Traditional Music.*

18. **Performance of repertoire:** All repertoire should be performed exactly as indicated in the published edition (with the exception of repeats: see *Regulation 19*). Music which is published with an accompaniment must be performed with that accompaniment. Music may not be altered, abridged, or cut except where such provision is made in the particular syllabus, or where the performance convention allows (e.g. Music Theatre, Electronic Keyboard and Organ, popular and jazz styles).
19. **Repeats:** Performance of repeats is at the candidate's discretion. In general, shorter repeats should be included, but longer repeats (e.g. full exposition of a sonata form movement) should not be played. *Da Capo* and *Dal Segno* signs should be observed.
20. **Fingering:** Specified fingerings in LCM or other publications should be taken as suggested guidelines only. Alternative fingering will not be penalised by examiners unless it adversely affects the musical result.
21. **Tuning:** Candidates may obtain assistance (from their accompanist) with tuning their instruments up to Grade 5. From Grade 5 onwards, candidates should tune their own instruments. Examiners will not provide tuning assistance.
22. **Use of photocopies:** The use of photocopied music by candidates or accompanists, unless authorised by the publisher or copyright holder, will not be permitted in the examination *with the following exceptions*:
- (a) a photocopy of a page of a work for ease of performance due to a difficult page turn;
 - (b) a photocopy of a piece for the examiner's reference, provided the performer is using his or her own published edition;
 - (c) an enlarged or modified photocopy for candidates with particular needs, provided the original edition is also brought to the examination and presented to the examiner (see *Regulation 35*).
- All such photocopies will be retained by the examiner, and destroyed at the end of the day's examinations. Compliance with copyright law is the responsibility of the candidate. However, failure to comply will lead to disqualification and no marks or certificate being awarded.
- NB. Printouts of *legal* internet downloads are acceptable.
23. **Accompaniment:** It is the candidate's responsibility to provide a suitable accompanist, if required, for the examination. LCM Examinations cannot provide or recommend accompanists. Pre-recorded backing tracks may NOT be used except in the following circumstances:
- (a) in Music Theatre, Popular Music Vocals, Drum Kit, Tuned Percussion or Jazz examinations;
 - (b) where a piece specified in the syllabus is published with a pre-recorded backing track;
 - (c) with the prior approval of LCM Examinations.
- Where pre-recorded backing tracks are used, candidates are responsible for bringing and operating their own equipment. For young candidates (aged 12 and below), an adult may be present to operate the equipment (see *Regulation 16b*).
24. **Stopping candidates:** Examiners may, at their discretion, stop a candidate at any part of a practical examination if the candidate has exceeded the time allowed for that part of the examination.
25. **Exemptions:** No exemptions are allowed from any part of any examination. Where an examination component is not attempted, a mark of 0 will be awarded. However, with the exception of aural tests and viva voce components, where all elements of a component are at least attempted, a mark of at least 33% will be awarded for that component.
26. **Recording of examinations:** A random selection of examinations is recorded for purposes of archiving, standardisation and examiner training. LCM Examinations undertakes not to disseminate such recordings in any way whatsoever beyond these purposes. The recording equipment used is unobtrusive and does not affect the examination procedure. Such recordings may not be used or referred to at any stage in connection with any enquiry, appeal or complaint about the examination, either by the candidate or by LCM Examinations.
27. **Examination results and certificates:** A written report will be compiled for each examination. Candidates will be informed of the result of practical examinations as soon as possible, and not later than four weeks after the examination date, by post. Theory results will be sent several weeks after the written examination date. Representatives are not allowed to issue results over the telephone. Certificates for successful candidates are normally dispatched within eight weeks of the date of the examination, but very often they will be received sooner than this. Replacements of lost or destroyed certificates can normally be provided, subject to proof of the result, the applicant's identity, and payment of the appropriate current fee. An *Application for Replacement Certificate* form should be submitted. The form can be found on the LCM Examinations website, and is available on request from the LCM Examinations office.
28. **Graded qualifications:** Certificates issued for graded examinations are not intended to imply that the holder is qualified to teach, nor do they give the holder the right to use any letters after his or her name.

29. **Diplomas in teaching:** LCM Diplomas in Teaching do not confer Qualified Teacher Status (QTS) on the holder.
30. **Diploma completion period:** Diploma candidates must complete all the requirements of the examination within a 3-year period, in order to be awarded the qualification. Details of components of examinations which may be carried forward on re-entry are detailed in individual syllabuses.
31. **Academic dress:** Holders of diplomas may wear academic dress as follows:
 DipLCM, DipMusLCM: Gown
 ALCM, AMusLCM: Gown and Cap
 LLCM, LMusLCM: Gown, Cap and Licentiate Hood
 FLCM: Gown, Cap and Fellowship Hood
- Academic dress is available for hire or purchase from the official robemaker, William Northam Ltd., PO Box 367, Waterbeach, Cambridge, CB5 9QY (tel. 01223 863022). A Form of Authority, obtainable from LCM Examinations, should accompany all orders.
32. **Enquiries and appeals:** Information about lodging enquiries and appeals against results is contained in the document *LCM Examinations Appeals Procedure*, available from LCM Examinations. Initial enquiries must be made in writing, enclosing a copy of the examiner's marksheet.
33. **Equal opportunities:** Entry for examinations is available, and assessment is carried out, on an equal and fair basis to all candidates, regardless of origin, status or background. The full policy is contained in the document *Equality of Opportunity, Reasonable Adjustments, and Special Consideration*, available on request from the LCM Examinations Office.
34. **Special consideration (including absence through illness):** Candidates who are unable to take an examination at the scheduled time, for medical reasons, are invited to submit a signed doctor's letter indicating the reason, and accompanied by the Attendance notice, to the LCM Examinations Office (or, in the case of Popular Music Theory, to the Examinations Registry). The letter must be submitted within two weeks of the examination date, and must make clear that the candidate was incapacitated on the day of the scheduled examination. The candidate will then be permitted to re-enter for the same examination on payment of half the current fee. Candidates who are unwell on the day of the examination, but elect to take the exam nonetheless, will not be granted any special consideration in terms of assessment, and will not be eligible for a half-fee re-entry. Candidates who are unable to take an examination for compassionate reasons (e.g. death of a relative) are also covered under this policy. The full policy is contained in the document *Equality of Opportunity, Reasonable Adjustments, and Special Consideration*, available on request from the LCM Examinations office.
35. **Reasonable adjustments (candidates with particular needs):** LCM Examinations is particularly sensitive to the requirements of candidates with particular needs, and encourages them to enter for examinations. There is a wide range of special procedures which can be put in place for such candidates. Full details and accompanying documentation MUST be included at the time of entry; examiners are not able to consider such documents if submitted for the first time on the day of the examination. Full details of this policy are contained in the document *Equality of Opportunity, Reasonable Adjustments, and Special Consideration*, available on request from the LCM Examinations office.
36. **Language:** All examinations are conducted in English.
37. **Syllabus requirements and infringements:** It is the candidate's responsibility to obtain, and comply with, the current syllabus. Please note that certain syllabuses and endorsements contain particular conditions and requirements. Where candidates are entered for examinations by teachers, the teacher should ensure that candidates are entered in accordance with the current syllabus requirements. Where there are variations without prior agreement, marks may be adjusted or deducted, and in serious cases, candidates may be disqualified.
38. **Changes to syllabuses:** LCM Examinations follows a policy of consistent improvement and development and may, without notice, update its regulations, syllabuses and other publications. Where a repertoire piece not published by LCM Examinations is taken out of print by the publisher, LCM Examinations will seek to provide an alternative as soon as possible. Where alterations, additions and/or deletions to syllabuses take place, LCM Examinations cannot accept responsibility for informing candidates and teachers of such changes except through *Forte* (the LCM Examinations newsletter) and the normal reprinting process.
39. **Availability of syllabuses:** A wide range of examinations and subjects is offered, across the full range of Music, and Drama and Communication. All syllabuses and repertoire lists are available free of charge from LCM Examinations, and from local representatives.